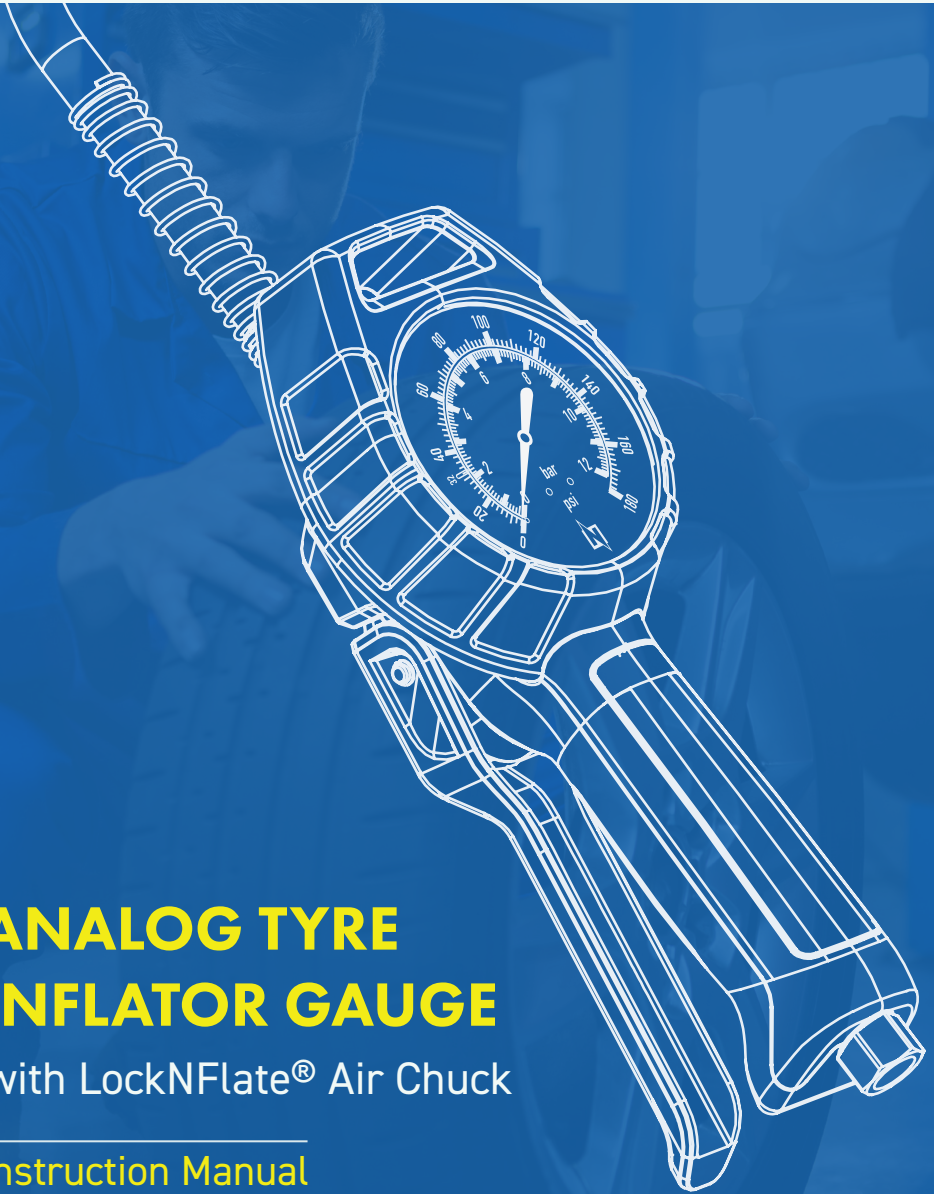


PRO

LOCKNFLATE®



ANALOG TYRE INFLATOR GAUGE

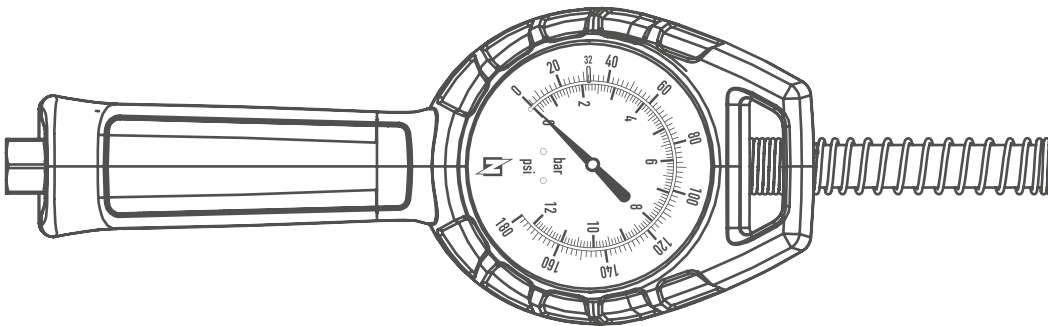
with LockNFlate® Air Chuck

Instruction Manual

LNL65306-BSPT

TABLE OF CONTENTS

- Introduction
- Features
- Safety Instructions & Warnings
- What's in the Box?
- Technical Specifications
- Get to know your Inflator
- Operating Instructions



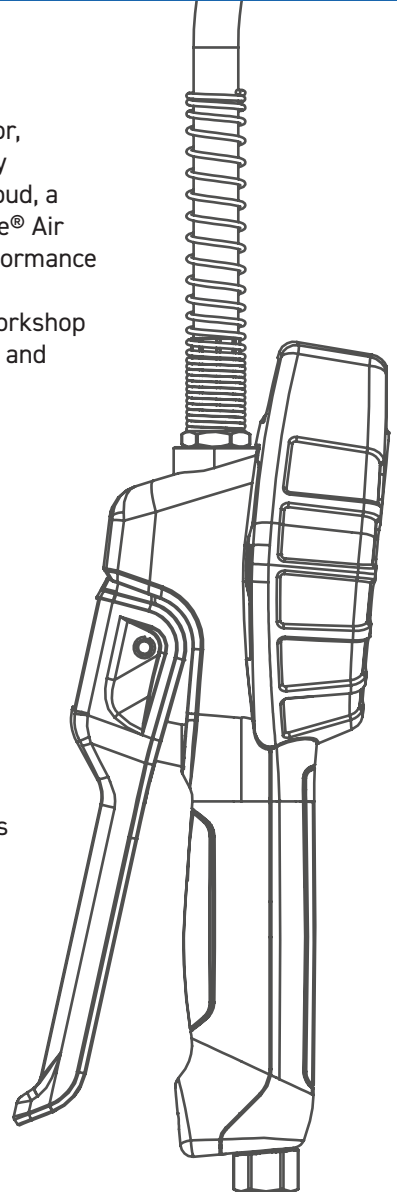
INTRODUCTION

Thank you for choosing the LockNFlate® PRO Tyre Inflator, engineered for fast, accurate, and reliable inflation in any environment. Built with a durable protective rubber shroud, a precision analog dial gauge, and the patented LockNFlate® Air Chuck, this inflator delivers a secure and consistent performance up to 174 PSI (12 BAR).

Ideal for cars, SUVs, trucks, motorcycles, and general workshop use, it's designed to offer maximum control, ease of use, and long-lasting durability.

FEATURES

- Wide pressure measurement range: 7–174 PSI (0.5–12 Bar)
- High accuracy ± 2 PSI (± 0.14 BAR)
- Maximum inlet pressure up to 218 PSI (15 Bar)
- LockNFlate® locking open-flow chuck for secure, leak-free connection
- Glare-free white-face analog dial
- Durable 32 in. (800 mm) hybrid polymer hose
- Fast inflation flow rate up to 900 L/min @ 174 PSI
- Inflate, deflate, and pressure measurement functions
- Protective rubber shroud for enhanced durability
- Fully portable cordless operation
- Battery-free reliability



⚠ IMPORTANT

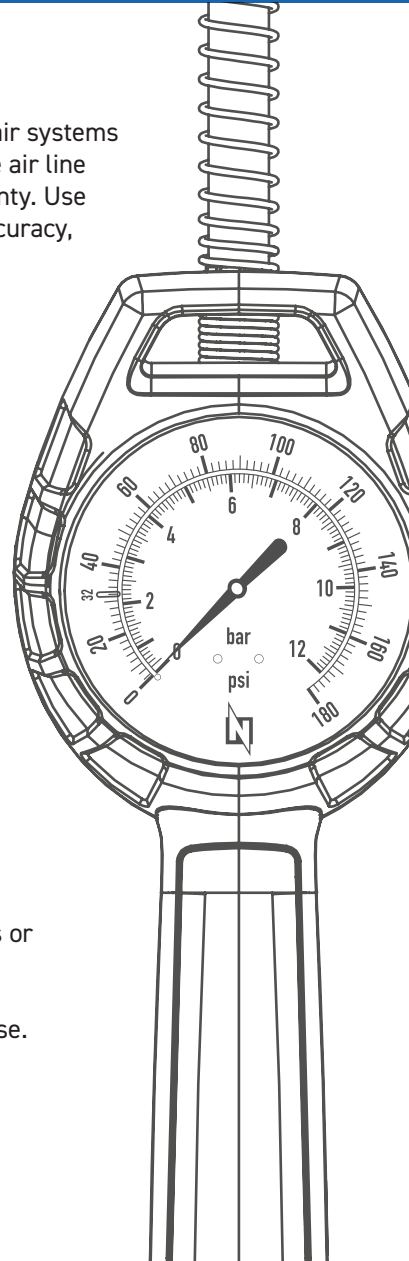
This tyre inflator must only be connected to compressed air systems that supply clean, dry air. Moisture or contaminants in the air line may cause damage to the product and can void the warranty. Use appropriate air pre-filters with this inflator to maintain accuracy, reliability, and product longevity.

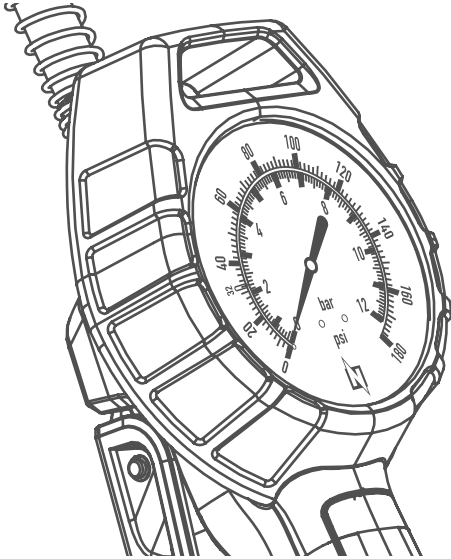
⚠ SAFETY INSTRUCTIONS

- Read all instructions carefully before use.
- Do not exceed the maximum rated inlet pressure of 218 PSI (15 BAR) or the inflation range of 174 PSI (12 BAR).
- Ensure all connections are secure before inflating.
- Keep hands, face, and clothing away from moving or pressurized components.
- Always wear appropriate eye protection during operation.
- Keep away from devices that may be affected by magnetic fields (e.g., pacemakers, magnetic storage media).

⚠ WARNING

- Do not use the inflator if the hose, chuck, or gauge appears damaged.
- Avoid operating the inflator near flammable materials or open flames.
- Do not leave the inflator unattended while in use.
- Disconnect the unit from the air supply when not in use.
- Store the inflator in a clean, dry place away from extreme temperatures.
- The magnet is not removable and should not be tampered with.





WHAT'S IN THE BOX?

LockNflate Air Chuck®

Leak-free connection every time

Extra-Long Hose

32" (800 mm) Hybrid Polymer Hose

Inline Hose Swivel

Smooth movement, reduces kinks

Inflator

LockNflate Analog Inflator

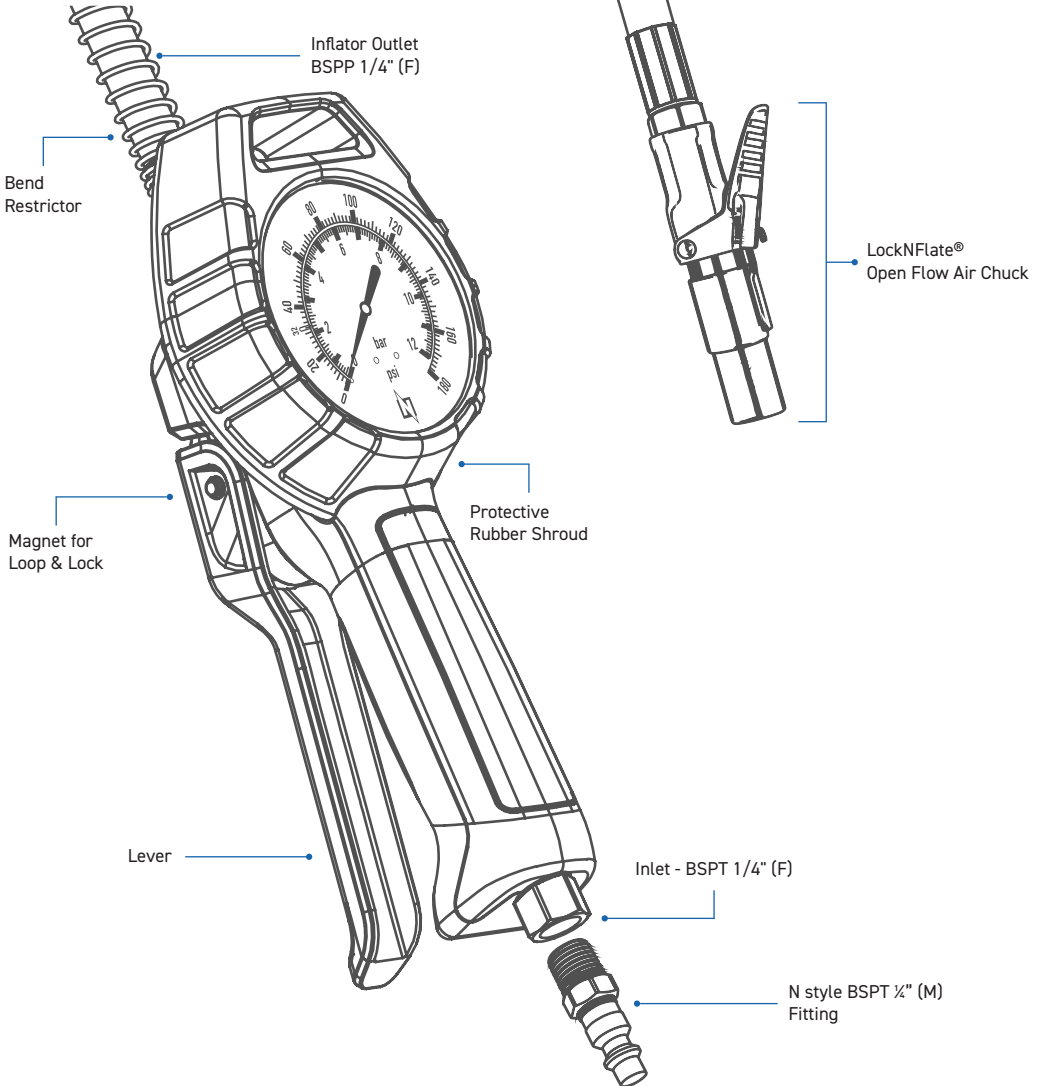
Fitting

N style BSPT 1/4" (M)

TECHNICAL SPECIFICATIONS

Features	Specifications
Measuring Range	7-174 PSI (0.5-12 BAR)
Accuracy	±2 PSI (±0.14 BAR)
Maximum Inlet Pressure	218 PSI (15 BAR)
Chuck Type	1/4" BSPT (F) LockNflate® Locking, Open-Flow Air Chuck
Chuck Compatibility	Schrader valves (VG8/8V1 valve threads)
Display	Analog Dial Gauge
Hose Length	32" (800 mm) Hybrid Polymer Hose
Inflation Flow	900 L/min @ 174 PSI
Working Temperature	14 °F to 122 °F (-10 °C to +50 °C)
Inflator Outlet Thread	G (BSPP) 1/4" (F)
Inflator Inlet Thread	BSPT 1/4" (F)
Hose Outlet Thread	BSPT 1/4" (M)
Operation	Inflate / Deflate / Measure
Warranty	1-Year Limited Warranty
Product Dimensions / Net Weight	9.25 x 3.5 x 4.3 in (1.5 lb) (235 x 90 x 110 mm / 0.68 kg)

GET TO KNOW YOUR INFLATOR



OPERATING INSTRUCTIONS

To connect

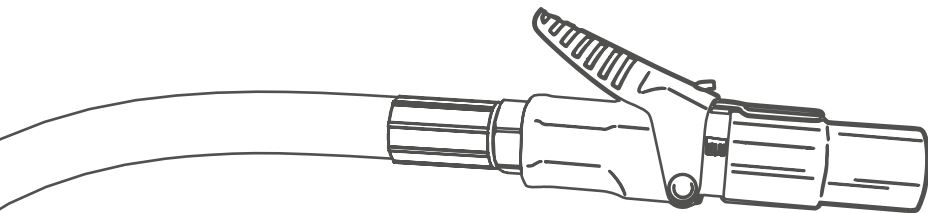
Remove the tyre valve cap. Depress the LockNFlate® chuck lever and firmly press the chuck onto the tyre valve stem. Release the lever and ensure a secure, leak-free seal.

To inflate

Release the lever fully to inflate the tyre. Monitor the pressure on the display until the desired level is reached.

To deflate

Press the lever halfway to release air and reduce pressure. Check the display and repeat until the correct pressure is achieved.



PRO

LOCKNFLATE®

DTIG_LNF_IM_2601_JJ_V1

LOCKN LUBE

41-49 Henderson Street, Turrella NSW 2205 Sydney, Australia

Phone: 1800-185-102

Email: info@locknlube.com

For Warranty Terms and Conditions see: www.locknlube.com



Note:

This product should be disposed of according to all applicable local and national government environment regulations and guidelines.

